

HERE'S WHO YOU'LL BE WORKING WITH



MIDDI
Commander and cheif, thought this whole thing would be a good idea, likes strong black coffee and tidy cabling.



TONY
When not checking his phone plays a mean piano, always eating, hide your snacks and sweets or he will snaffle them.



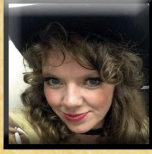
SOPHY
Fiddle player, small, talkative, far too much energy, likes unnecessary minor chords



TREV
Drummer, fascinated by everything, has a childs wonder, deaf as a post, doesn't wear underwear (be warned!).



GRIFF
Rock solid guitar playing machine and has some of the best road stories ever know to civilisation.



SARAH
Always smiling, we have no idea why, heavy geordie accent which often slips in while she's sinigng.



PHIL
Top quality wagon driver, head of crew, heart of gold and no filter whatsoever.



PAUL
Sound engineer, can run quite fast for a fat lad, doesnt like carrying the mixing desk and will likely ask you to do it for him.

SHOW DAY SCHEDULE

2pm Crew arrives on site, busting to pee, after visiting the loo and haivng a look around Phil smokes a cigarette and then opens the truck.

2.10pm Load-In & setup starts, 90 minutes of organised pandemonium ensues. At this point Paul will ask you to take the FOH desk to mix position and Phil will call him a lazy ****

2.30pm - Flying required, backdrop, legs and chandies. It's at this point that Trev will subcontiously position himself directly under whichever bar you are flying.

3.30pm Line and lighting check. It's at this point where it starts to look like a show and that we actually knew what we were doing all along.

3.45pm- 5.30pm Crew go for lunch or snooze, or both, and anything that needs fixing or cleaning will get done. Dancers arrive (Oh, we have dnacers, I forgot to mention that!)

5.30pm Full sound check & Final stage check.

6.30pm - Hazers on, Background music on, House is yours.

NB. YOUR GET IN TIME MIGHT BE DIFFERENT TO THE STANDARD 2pm IN WHICH CASE ALL OF THE ABOVE TIMES MAKE NO SENSE AT ALL BUT THE STRUCTURE OF THE DAY REMAINS THE SAME AND WE'LL HAVE THE HOUSE HANDED TO YOU 60 MINS BEFORE CURTAIN UP.

ALL OF OUR LEGAL DOCUMENTS

PUBLIC LIABILITY INSURANCE, RISK ASSESSMENT, PAT TESTS, PRS DECLARATIONS, FIRE RETARDANT CERTIFICATE, ETC.

CAN BE VIEWED & DOWNLOADED AT

WWW.WILDMURPHYS.COM/LEGAL



HOUSE CREW NOTES

SHOW DATE:

GET IN TIME:



SHOW AND TECHNICAL INFORMATION 2024

HI THERE!

First of all, can we say what an honour it is to have your amazing venue play host to our show. We hope that in putting together this brief we can make the production on the day go as smoothly as possible. We have a reputation of being very little hassle to venues in our requirements and also being very easy to work with, we hope to live up to that reputation during our time with you. We thank you for taking the time to read though this document and are very much looking forward to working with you. If you have any problems, questions, wants or needs then please get in touch with Middi on 07970 710450 or email middi@wildmurphys.com at anytime.

INFO FOR FRONT OF HOUSE

RUN TIME:

60 mins > 20 min interval > 60 mins

PHOTOS/VIDEOS:

Nothing excessive but odd ones are ok, no flash. (Unless the venue's policy is no photo/video)

SHOW CONTENT:

There is haze, there is loud music.

There's no flashing/strobe lighting, no swearing, no nudity, no audience on stage, no performers in auditorium.

MERCH / MEET AND GREET:

No merch, Performers will usually go out front at end of show.



**ONE NIGHT IN DUBLIN LTD. IS A NON-PROFIT ORGANISATION...
...BUT NOT THROUGH CHOICE, JUST POOR MANAGEMENT!**

SO... WHAT DO WE NEED FROM YOU?

(SPOILER ALERT, NOT A LOT! WE'RE SUPER SELF CONTAINED)

ARRIVING

We'll need to get in at the required time. Our regular get-in time is 2pm but depending on our tour schedule we might change this to anywhere between 12pm and 3pm (Please confirm the get-in time with Middi via email middi@wildmurphys.com or on 07970 710450)

PARKING

We will require parking for 2 production vehicles;
DAF 15t Wagon - WM53 DUB - 12m Long
VW Crafter Crew Van - RF15 VHV - 6m Long

Unless we hear otherwise from you it will be understood that you have taken care of any needed permits and associated. If there are any issues then please contact Middi as soon as possible.

DRESSING ROOMS

We are not divas about dressing rooms, as long as there's a minimum of 2 then that's fine. We bring our own tea, coffee, mugs, milk, kettle and iron.

POWER

Our preferred power is one 3 phase 63amp CEE socket down stage left, if your venue has one of these sockets then this is fantastic news, if not, then it's not a problem, we carry converters for most UK/EU commercial power supplies and we can work from any popular size single or 3 phase socket.

At a minimum we can work from 1 x 32amp & 1 x 16amp single phase sockets. Let us know what you have and we'll be able to work with it.

SOUND

We tour with our own point source system which we are happy to bring in and setup, However, depending on what is available in house we may either like to use the in house system, or we may like to patch in to parts of the in house system to make use of delays and balcony fills etc. Usually our sound guy (Paul) would decide this on the day upon arrival.

LIGHTING

We tour our own lighting rig which is made up of floor standing towers and runs of uplighters. YOU DO NOT NEED TO RIG OR DE-RIG ANY OF YOUR LIGHTING. It's very rare we need to use any in house lighting at all but if we do it will only be an apron wash depending on how far forward we can get the front towers. PLEASE NOTE: Our lighting is pre-programmed and played back from the side of stage we do not carry a traditional desk, we can not patch in to your lighting (Including house lights) with our desk. Control of venue LX must be done by your desk or software.

HAZE

We employ the use of haze throughout our shows. We have our own haze machines and will of course check that any in house fire alarms are isolated before we turn them on.

FLYING

We will need to fly the following items:

> Backcloth - 10m wide and 7m tall - 12kg

> 2 pairs of legs - 1.6m wide and 6m tall - 1.5kg (per pair)

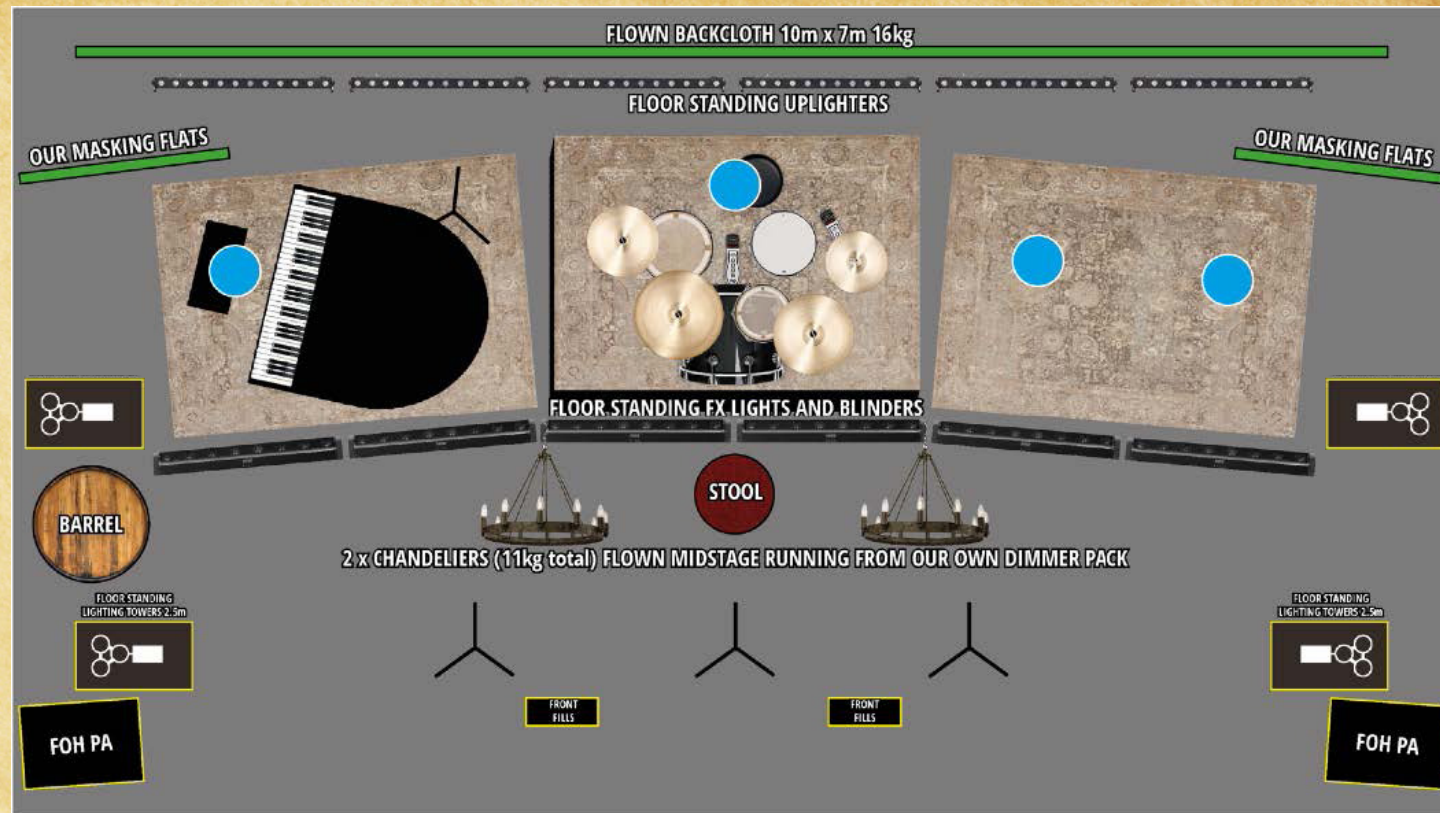
* Don't worry if you can not fly that high, we have clips and clamps

> 2 chandeliers - mid stage - 11kg (total with cables)

These can either be flown on a flybar and we can run a cable down to our own dimmer pack or they can be flown on an existing LX bar and hooked into your dimmers via 15amp plugs (40% brightness for the entire event)

NB: WE HAVE OUR OWN RISERS.

STAGE LAYOUT



SETLISTS



VOICE OVER INTRODUCTION
OPENING ACCOUSTIC MEDLEY
WHISKEY IN THE JAR
BOLD O DONAHUE
MOLLYS BAR
BLACK BAND / GALWAY SHAWL
LAS VEGAS
HOLLOWAY BOULEVARD
JOKE / SICK NOTE SONG (MIDDY)
THE CRAIC WAS 90
STREAMS OF WHISKEY
SEVEN DRUNKEN NIGHTS
SAINT ANNES
IRISH POST
SWEET SIXTEEN
THE NIGHT PADDY MURPHY DIED

NANCY WHISKEY
GALWAY GIRL
TELL ME MA
INSTRUMENTAL MEDLEY
SALLY MAC / ARE YOU LOOKING
MOLLY MALONE
DRUNKEN LULLABIES
IF I EVER LEAVE THIS WORLD
ALIVE
IRISH ROVER
DIRT OLD TOWN
AMERICAN LAND
BROWN EYED GIRL
WILD ROVER (False Ending)
WAGON WHEEL / FAIRYTALE
USTA LOVER

VOICE OVER INTRODUCTION
INSTRUMENTAL MEDLEY
IF YOU'RE GONNA PLAY IN TEXAS
GOD BLESSED TEXAS
KING OF ROAD / CHEATING HEART
FALLING FOR A REASON
CLASSICS MEDLEY
PAST THE POINT OF RESCUE
JOLENE
RODEO MAN
ORANGE BLOSSOM SPECIAL
COPPERHEAD ROAD
MAN I FEEL LIKE A WOMAN
CHICKEN FRIED
CHATTAHOOCHEE
TAKE IT EASY
FRIENDS IN LOW PLACES



DEVIL WENT DOWN TO GEORGIA
YELLOW ROSE OF TEXAS
LET YOUR LOVE FLOW
9 TO 5
DIVE BAR
SUDS IN THE BUCKET
RHINESTONE COWBOY
FOLSOM PRISON BLUES
THE GAMBLER
COUNTRY ROADS
LOUISIANA SATURDAY NIGHT
FIDDLE MEDLEY
ISLANDS IN THE STREAM
COWBOY AWAY (False Ending)
CALLIN' BATON ROUGE
ACHY BREAKY HEART